

Simulation Technology Reference

Wireless Skill Reporter Laerdal

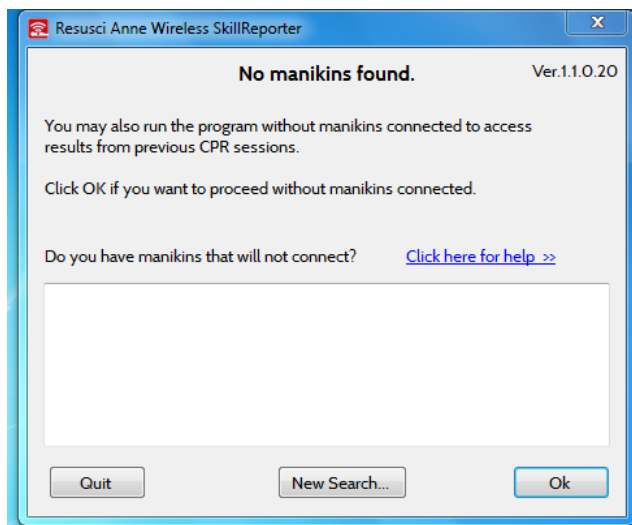
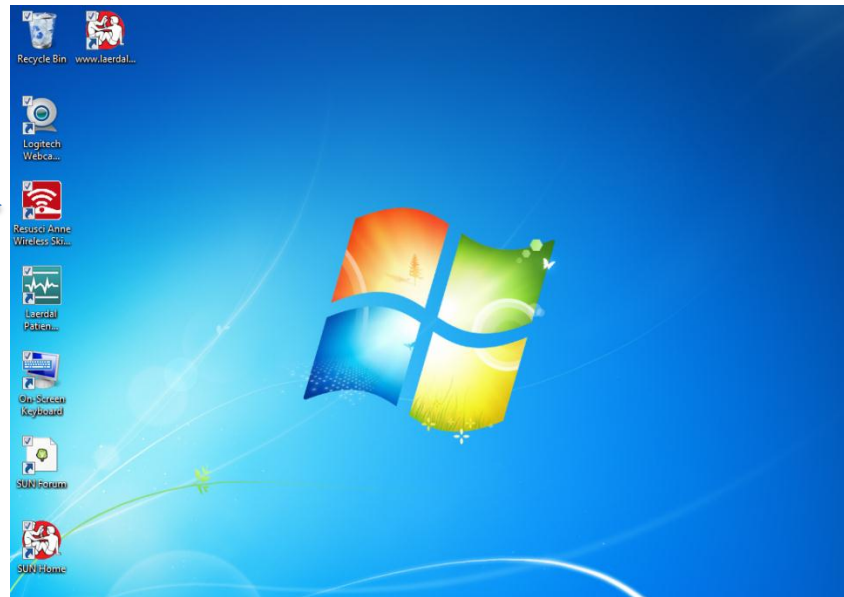
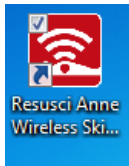


UNC Healthcare
Advanced Life Support Programs
Version 1 Dated 5 June 2013

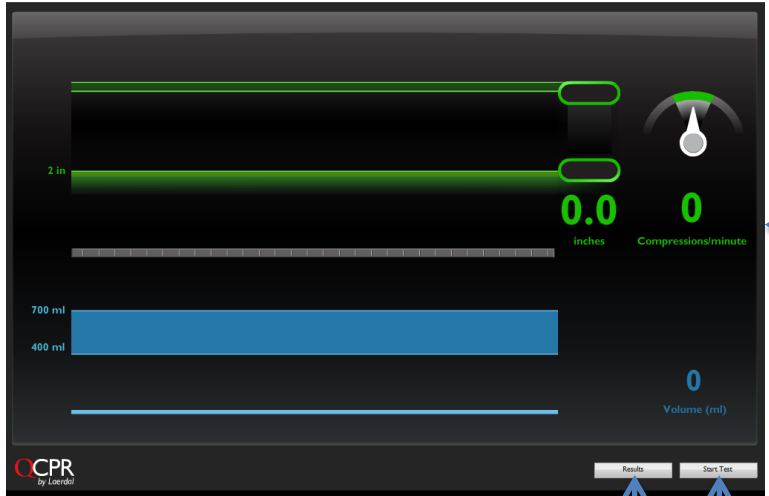
Resusi-Anne Wireless Skill Reporter

Laerdal

Launch program by double clicking on the Resusci Anne Wireless Skill Reporter desktop icon.



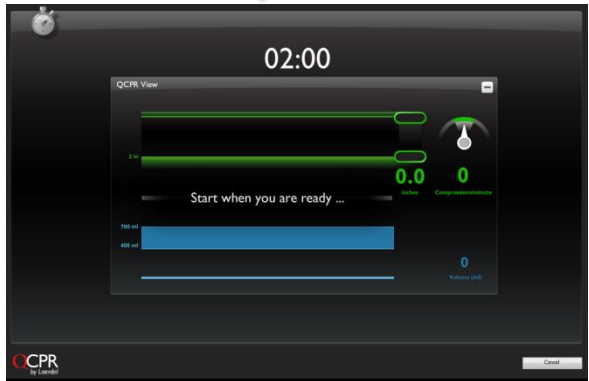
A dialog box will appear indicating the pairing of manikins. If the manikin is turned on and the peripheral bluetooth device is plugged in, the box will indicate "1 manikin found"

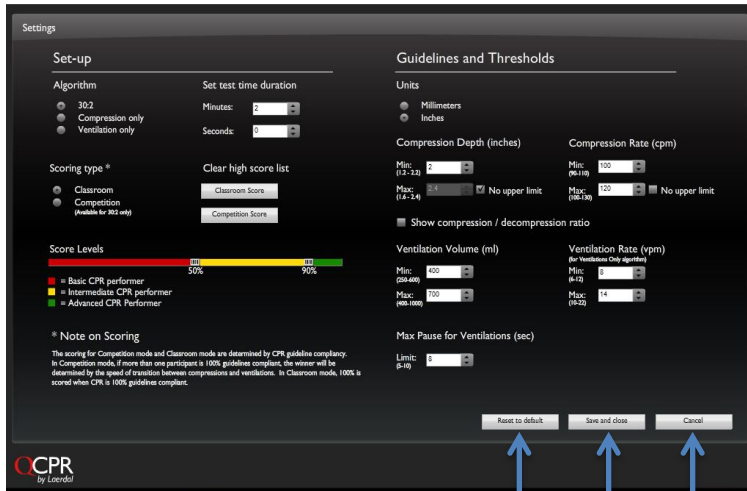


This is the program practice display, which appears after connecting to the manikin. Unless testing is required or recommended, users will continue operation in this display.

An Instructor may also display practice or testing results by selecting **Results**. The results display will appear, as shown below.

If a test is required or recommended, users will select **Start Test**. The testing display and timer will appear, as shown below.



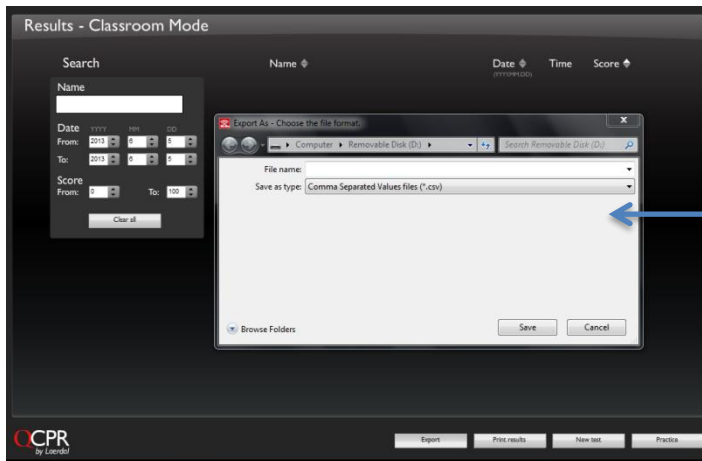


The **Settings** display allows users to adjust certain practice and testing settings such as compression depth minimum and maximum, test duration, compression rate minimum and maximum and tidal volume range.

Reset settings to manufacturer default

Save and Close settings display

Cancel and return to previous page



Users may export and save testing data to a USB device as a .csv file. To do this, select Export and follow the direction in the dialog box.